



Investing In Growing Arizona's Future

Plant trees! You pick the species by zone and size. ACTC has a list for you to pick from and we will work with you to customize your package including:

- How many trees you want to plant
- How many volunteers you have
- Your budget
- Where do you want to plant and in which zone
- Your investment as an individual can be as low as \$300, or as a corporation can be as high as \$50,000.

Tree planting investment includes:

- Planting
- Transportation of trees
- Appropriate tools to dig holes and labor for holes
- Stakes
- Water
- Certified arborist on site
- Top dressing
- Follow-up care for 2 years

ACTC is a 501(c)(3) organization. Your investment at any level is tax deductible.

Annual Corporate Sponsor Packages

Option 1: \$15,000 includes:

- One-year sponsorship from date begun
- 75 trees (at \$200 each)
- Logo and link on our website
- Exposure at all of our events, including our annual conference
- Our undying devotion as an environmental friendly organization

Option 2: \$25,000 includes:

- One-year sponsorship from date begun
- 150 trees (at \$166 each)
- Annual corporate sponsor plaque
- Logo and link on our website
- Exposure at all of our events, including our annual conference
- Press coverage
- Our undying devotion as an environmental friendly organization

Option 3: \$50,000 includes:

- Two-year sponsorship from date begun
- 350 trees (at \$142 each)
- TITLE SPONSOR
- Annual corporate sponsor plaque
- Press coverage
- Logo and link on our website
- Exposure at all of our events, including our annual conference
- Our undying devotion as an environmental friendly organization

Plant Trees Grow Communities Put Down Roots

For More Information

Visit the ACTC website at www.aztrees.org or contact:

- Your local nursery
- The University of Arizona Cooperative Extension Office in your county
- Trees Are Good www.treesaregood.com
- The Western Chapter International Society of Arboriculture www.wcisa.net
- International Society of Arboriculture www.isa-arbor.com
- The Arizona State Forestry Division www.azsf.az.gov

For more information, contact:
Conni Ingallina, Executive Director
Arizona Community Tree Council, Inc.
e-mail: execdirector@aztrees.org
web site: www.aztrees.org

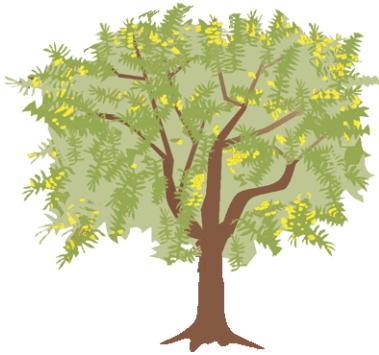


Plant Memories grow Arizona's future!



The best time to plant a tree
was 20 years ago;
The next best time is now!

- Anonymous



Planting Trees Give Life And Legacy

As Arizona begins to plan its centennial, let's join hands and plant hundreds of trees to celebrate Arizona's 100th birthday. It's a lofty goal and with your help, we can do it. Adding hundreds of trees to Arizona's landscape will provide our local neighborhoods and communities with shade, erosion control, cleaner air, improved wildlife habitats, fire restoration, and much, much more.

Today, more than ever, you know the importance of planting trees in Arizona and making sure they're an integral part of Arizona's community's fabric.

Arizona Tree Cities:

- | | |
|---------------------|------------------|
| Avondale | Peoria |
| Buckeye | Phoenix |
| Casa Grande | Pinetop/Lakeside |
| Coolidge | Prescott Valley |
| Florence | Quartzsite |
| Gilbert | Scottsdale |
| Glendale | Show Low |
| Lake Havasu City | Snowflake |
| Litchfield Park | Tempe |
| Luke Air Force Base | Tucson |
| Mesa | Yuma |
| Paradise Valley | |



Sustainable Giving Packages

Tell your clients "Thank You" for their business and invest in their community by presenting them with a commemorative tree for their property. What keeps on giving better than a tree?

- Maybe you provide services for a school district. Why not give them a tree or two?
- Have you been a frequent traveler/tourist to Arizona? Keep Arizona cool, green and majestic.
- Donate a tree for your favorite region in Arizona!
- Do you want to give back to your city? Donate a tree to your city for a park, golf course or city campus.
- Are you an alumnus of an Arizona community college or university? Give back and donate a tree.
- Want to thank a care facility for services provided to you or a loved one? Donate a tree.
- Give a tree as a holiday gift.

Commemorative Trees

Plant a tree to honor loved ones, or plant a tree to recognize veterans, police officers or firefighters. Plant a tree to commemorate a wedding or for special occasions.

The price to plant a tree: \$300 each

Your company can choose to have a plaque placed at your place of business with all the names in one place or choose to be added to the plaque where the trees are planted.

Choose from a variety of tree planting locations like your place of business, schools, municipalities, parks, forests or any other location(s) around the state.

Tree Planting Benefits

Trees absorb carbon dioxide from the atmosphere for photosynthesis. As a result of this chemical reaction, oxygen is released into the air while carbon is stored in the tree. About half of the weight of a mature tree is carbon.

You Choose Your 2011 Planting Date

ACTC organizes four major tree plantings a year and partners with corporations, schools, organizations, etc. to make a bigger impact in the community. Your donation, based on which level of sponsorship package you choose, can be disbursed throughout these plantings and combined with other organizations to create a greater impact within the community. Benefits include:

- Expand the existing canopy
- Replace the amount of paper and carbon footprint your company has depleted from the environment
- Cleaner air
- Improved environmental quality of life
- Increased real estate value
- Improved educational environment and learning

There are four dates to choose from each year:

- 1st Quarter: February 14th – AZ Statehood Day!
- 2nd Quarter: April 29 – Arbor Day
- 3rd Quarter: June 14 – Flag Day
- 4th Quarter: October – Make a Difference Day

For more information, contact:

Conni Ingallina, Executive Director
Arizona Community Tree Council, Inc.
e-mail: execdirector@aztrees.org
web site: www.aztrees.org

Get Involved!

ACTC helps your company get involved by putting together:

- Your Dollars
- Your Plants
- Your Volunteers

Bringing them all together in a sponsorship package that includes:

- The Tree
- Landscaper/Arborist oversight – including proper tools
- Hole digging
- Irrigation/water
- Education



ACTC is a 501(c)(3) organization. Your investment at any level is tax deductible.

